



## ***BioCarbon Fund - Initiative for Sustainable Forest Landscapes***

*CSO Briefing and Dialogue, Washington October 2015*



**BioCarbon Fund**  
Initiative for Sustainable Forest Landscapes

---



# BioCarbon Fund

Initiative for Sustainable Forest Landscapes

The ISFL aims to promote and reward reduced greenhouse gas emissions and increased sequestration through better land management, including REDD+ (Reduced Emissions from Deforestation and forest Degradation), climate smart agriculture, and smarter land use planning and policies.

- **Contributing Participants:** Germany, Norway, UK, US
- **Geographically diverse portfolio of four jurisdictional programs**
- **Operational in November 2013**

# CONTENTS

---

**1. RECENT PROGRESS**

**2. STAKEHOLDER ENGAGEMENT**

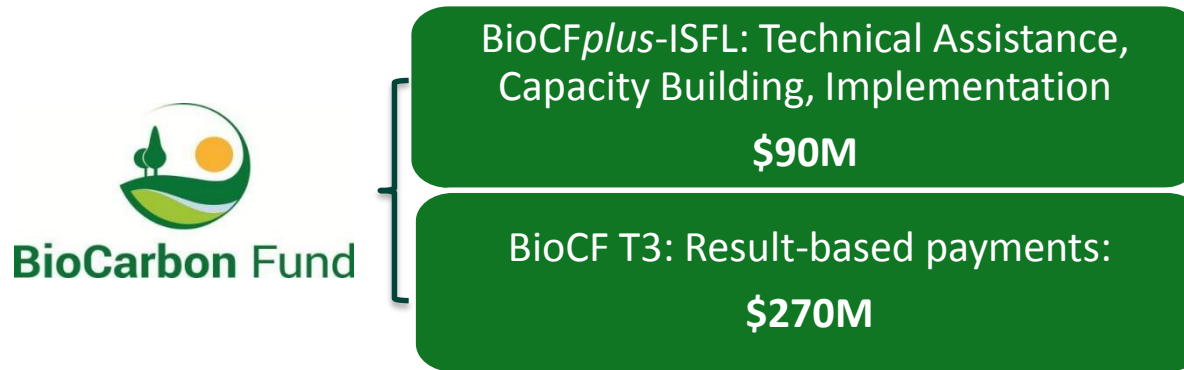
**3. COUNTRY PROGRAMS**



# UPDATE ON FUND CAPITAL

---

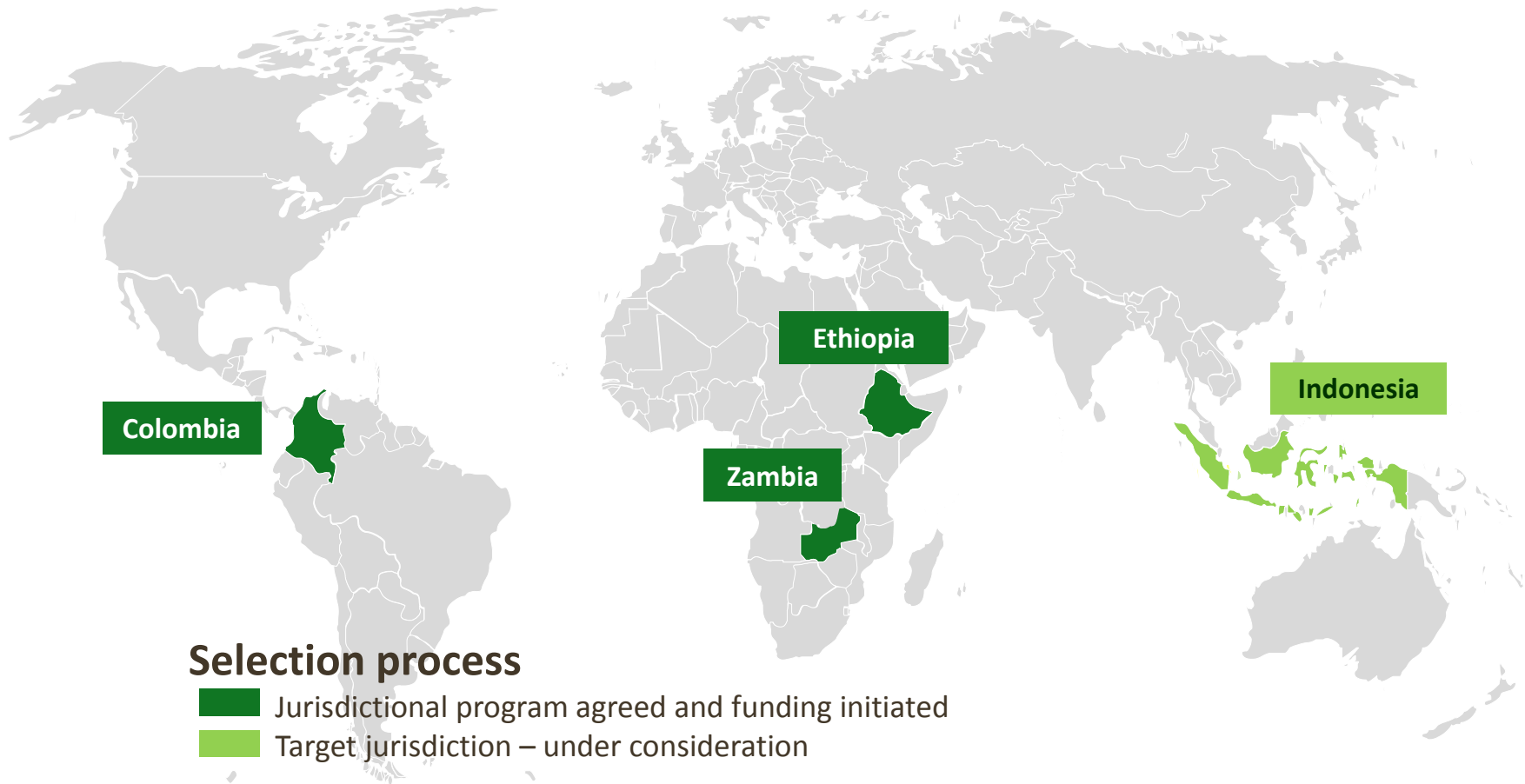
## Total Fund Capital: \$360 million



- **Additional Contribution:** US now a donor to BioCF T3
- **Despite increase in contributions, lower projected fund capital due to exchange rate fluctuations**

# ISFL COUNTRY PROGRAMS FUNDED AND UNDER EVALUATION

---





# FIRST ISFL ANNUAL MEETING AND ANNUAL REPORT

---

- Annual Meeting:  
London, August, 2015
- Annual Report:
  - Lessons learned
  - Initiative progress
  - Country program updates



# PRIVATE SECTOR ENGAGEMENT APPROACH

---

## **Firm specific interventions:**

- (1) Increase productivity and reduce pressure on forests.
  - (2) Alternative sources of sustainable livelihoods.
- 

**Firm**

## **Tackle the sectoral drivers of deforestation:**

- (1) Identify key sectors and players responsible for deforestation.
  - (2) Influence producers and buyers to adopt better standards.
- 

**Sector**

## **Promote and reward better land management:**

- (1) Develop local governance capacity.
  - (2) Work with local communities to ensure buy-in.
- 

**Landscape**

## **Policy and regulatory support to:**

- (1) Create the enabling environment for REDD+.
  - (2) Build the public sector capacity to adopt and enforce regulations.
- 

**Public Policy & Awareness**

# OTHER UPDATES TO THE ISFL WEBSITE

- Program-level information available on ISFL website. Zambia, Ethiopia, Colombia (coming soon)

The screenshot displays the BioCarbon Fund website interface. At the top, the logo for the BioCarbon Fund Initiative for Sustainable Forest Landscapes is visible, along with a search bar and a 'Go' button. A navigation menu includes links for Home, About Us, Programs, News, and Knowledge Center. The 'Programs' section is highlighted, showing a list of programs: ISFL Program Selection, Zambia Program, and Ethiopia Program Documents. A callout box on the left points to the 'Ethiopia Program Documents' section, which contains links to the Integrated Safeguards Data Sheet (ISDS), Project Information Document (PID), and Information Card (May 2015). The main content area features the 'Oromia Forested Landscape Program' with a detailed description of its goals and objectives. Below the text is a photograph of a group of people herding cattle on a dirt road. To the right of the photo, a text block describes the program as a strategic umbrella and coordination platform for multi-sector, multi-partner intervention on all forested landscapes in Oromia, aiming to deliver multiple benefits such as poverty reduction, resilient livelihoods, climate change mitigation, biodiversity conservation, and water management.

**Updated Ethiopia and Zambia program description**

**BioCarbon Fund**  
Initiative for Sustainable Forest Landscapes

Home About Us **Programs** News Knowledge Center

Home > Programs >

**Programs**

- ISFL Program Selection
- Zambia Program
- Ethiopia Program Documents**

- [Integrated Safeguards Data Sheet \(ISDS\)](#)
- [Project Information Document \(PID\)](#)
- [Information Card \(May 2015\)](#)

### Oromia Forested Landscape Program

The Oromia Forested Landscape Program's goal is to reduce deforestation and net greenhouse gas emissions from land use in all forested areas in the Oromia Regional State. Addressing the drivers of deforestation and forest degradation in Ethiopia will require an integrated landscape perspective that addresses trade-offs and synergies among land uses that include forest, crop, livestock, water, and household energy objectives.

The ISFL program would be Oromia Regional State's strategic programmatic umbrella and coordination platform for multi-sector, multi-partner intervention on all forested landscapes in Oromia. The 10-year program would contribute to a transformation in how forested landscapes are managed in Oromia to deliver multiple benefits such as poverty reduction and resilient livelihoods, climate change mitigation, biodiversity conservation, and water



# OTHER UPDATES TO THE ISFL WEBSITE

- Publicly available program-level documents posted

## New Program Documents Section

### Includes:

- Safeguards instrument documents (ISDS, PID, ESMF, SESA)
- Program Information Card

The screenshot displays the BioCarbon Fund website interface. At the top, the logo for the BioCarbon Fund Initiative for Sustainable Forest Landscapes is visible, along with a search bar and a 'Go' button. A navigation menu includes 'Home', 'About Us', 'Programs', 'News', and 'Knowledge Center'. The 'Programs' section is highlighted, listing 'ISFL Program Selection Criteria', 'Ethiopia Program', and 'Zambia Program'. Below this, a 'New Program Documents Section' is introduced, listing various documents for the Ethiopia Program, such as 'Project paper on additional grant funding', 'Integrated Safeguards Data Sheet (ISDS)', 'Project Information Document (PID)', 'Project Information Document (PID) Appraisal Stage', 'Strategic Environmental and Social Assessment (SESA)', 'Environmental and Social Management Framework (ESMF)', 'Resettlement Policy Framework (RPF)', and 'Information Card (May 2015)'. The main content area features the 'Oromia Forested Landscape Program' heading, a breadcrumb trail 'Home > Programs >', and a detailed description of the program's goals and objectives. A photograph shows a group of people herding cattle on a dirt road. The text explains that the program aims to reduce deforestation and net greenhouse gas emissions, and to foster equitable and sustainable low carbon development through on-the-ground activities and state-wide/local enhancements.

**BioCarbon Fund**  
Initiative for Sustainable Forest Landscapes

Home | About Us | **Programs** | News | Knowledge Center

Home > Programs >

### Oromia Forested Landscape Program

The Oromia Forested Landscape Program's goal is to reduce deforestation and net greenhouse gas emissions from land use in all forested areas in the Oromia Regional State. Addressing the drivers of deforestation and forest degradation in Ethiopia will require an integrated landscape perspective that addresses trade-offs and synergies among land uses that include forest, crop, livestock, water, and household energy objectives.

The ISFL program would be Oromia Regional State's strategic programmatic umbrella and coordination platform for multi-sector, multi-partner intervention on all forested landscapes in Oromia. The 10-year program would contribute to a transformation in how forested landscapes are managed in Oromia to deliver multiple benefits such as poverty reduction and resilient livelihoods, climate change mitigation, biodiversity conservation, and water provisioning. The Oromia Forested Landscape Program would foster equitable and sustainable low carbon development through a series of: (i) on-the-ground activities that address deforestation, reduce land-use based emissions and enhance forest carbon stocks; and (ii) state-wide and local enhancements to institutions, incentives, information, and safeguards management to upscale investment (enabling environment), including coordinating multiple REDD-relevant interventions across the regional state.

**Ethiopia Program Documents**

- Project paper on additional grant funding
- Integrated Safeguards Data Sheet (ISDS)
- Project Information Document (PID)
- Project Information Document (PID) Appraisal Stage
- Strategic Environmental and Social Assessment (SESA)
- Environmental and Social Management Framework (ESMF)
- Resettlement Policy Framework (RPF)
- Information Card (May 2015)

# OTHER UPDATES TO THE ISFL WEBSITE

- Links to country-level and jurisdictional-level REDD+ resources on country program pages

ISFL Program Selection Criteria  
Ethiopia Program  
Zambia Program

Zambia Program Documents

- Information Card (May 2015)

## Zambia Integrated Forest Landscape Program

The Zambia Integrated Forest Landscape Program will focus on Zambia's Luangwa valley, specifically in the overlapping regions of the Eastern and Muchinga provinces. The goal of the program is to promote reduced greenhouse gas emissions from the land sector in Zambia's Luangwa Valley, while simultaneously improving rural livelihoods and wildlife conservation. It aims to operate for 10 years (2015-2024) and will achieve on average emission reductions of 3.5 million tCO<sub>2</sub>e/year (35 million tCO<sub>2</sub>e in total). In total, the program is expected to cover 6 million hectares.



Of this, improved sustainable land management practices will be targeted in approximately 5 million hectares. For protection, a plan will be developed for the 5 million hectares. Both sub-programs will be implemented as a combination of Game Management and Wildlife Conservation methods. The program is strongly interested in the participation of local communities.

The Zambia Integrated Forest Landscape Program will be designed within the country's broader development agenda, known as the Vision 2030 with guidance from the National Development Plan (SNDP). The program will provide overall guidance on thematic issues such as agriculture, energy and land use more incentives, financing, benefit sharing, on rights, conflict management, monitoring, reporting and verification (MRV) Reference Emission Levels/Reference Levels, amongst others. With guidance from the strategy, the subnational jurisdictional REDD+ model will serve as a platform, lot for jurisdictional REDD+ adaptation, application and expansion throughout

This program is designed to build on existing REDD+ strategies and action plans. The Zambia program benefits from REDD+ readiness activities in place at the country-level through the UN-REDD program in Zambia.

The Zambia Integrated Forest Landscape Program will be designed within the country's broader development agenda, known as the Vision 2030 with guidance from the National Development Plan (SNDP). The program will provide overall guidance on thematic issues such as agriculture, energy and land use more incentives, financing, benefit sharing, on rights, conflict management, monitoring, reporting and verification (MRV) Reference Emission Levels/Reference Levels, amongst others. With guidance from the strategy, the subnational jurisdictional REDD+ model will serve as a platform, lot for jurisdictional REDD+ adaptation, application and expansion throughout

ISFL programs are designed to build on existing REDD+ strategies and action plans. The Zambia program benefits from REDD+ readiness activities in place at the country-level through the UN-REDD program in Zambia.

Program pages: Cross-reference to REDD+ resources

state 2/4 of Oromia's 277 woredas include some forest.

The Ethiopia ISFL program is building on the existing REDD+ Readiness process, and is generating lessons for the preparation of the Ethiopia National REDD+ Strategy. The Oromia Forest Landscape program benefits from existing REDD+ readiness activities at the country-level through the financial and technical support of Forest Carbon Partnership Facility (FCPF) REDD Readiness program in Ethiopia.



# OTHER UPDATES TO THE ISFL WEBSITE

- Direct links to REDD+ readiness resources

New REDD+ Readiness Section

Links to:

- REDD+ Steering Committee
- Stakeholder Engagement Taskforces

**Programs**

- [ISFL Program Selection Criteria](#)
- [Ethiopia Program](#)
- [Zambia Program](#)

**Ethiopia Program Documents**

- [Project paper on additional grant funding](#)
- [Integrated Safeguards Data Sheet \(ISDS\)](#)
- [Project Information Document \(PID\)](#)
- [Project Information Document \(PID\) Appraisal Stage](#)
- [Strategic Environmental and Social Assessment \(SESA\)](#)
- [Environmental and Social Management Framework \(ESMF\)](#)
- [Resettlement Policy Framework \(RPF\)](#)
- [Information Card \(May 2015\)](#)

**REDD+ Readiness**

- [Ethiopia REDD+ Strategy, Pilot Projects, Safeguards, Consultations](#)
- [REDD+ Steering Committee](#)
- [Stakeholder Engagement Taskforces](#)

[Home](#) » [Programs](#) »

## Oromia Forested Landscape Program

The Oromia Forested Landscape Program's goal is to reduce deforestation and net greenhouse gas emissions from land use in all forested areas in the Oromia Regional State. Addressing the drivers of deforestation and forest degradation in Ethiopia will require an integrated landscape perspective that addresses trade-offs and synergies among land uses that include forest, crop, livestock, water, and household energy objectives.



The ISFL program would be Oromia Regional State's strategic programmatic umbrella and coordination platform for multi-sector, multi-partner intervention on all forested landscapes in Oromia. The 10-year program would contribute to a transformation in how forested landscapes are managed in Oromia to deliver multiple benefits such as poverty reduction and resilient livelihoods, climate change mitigation, biodiversity conservation, and water provisioning. The Oromia Forested

Landscape Program would foster equitable and sustainable low carbon development through a series of: (i) on-the-ground activities that address deforestation, reduce land-use based emissions and enhance forest carbon stocks; and (ii) state-wide and local enhancements to institutions, incentives, information, and safeguards management to upscale investment (enabling environment), including coordinating multiple REDD-relevant interventions across the regional state.

The program would have two components. An US\$ 18 million mobilization grant would finance activities over a 5-year period: (1) Local-level activities; and (2) State-level activities/ enabling. These funds would be channeled to Government of Ethiopia as a recipient executed grant. The second component would consist of US\$ 50 million of Emission Reductions Payments for verified emissions reductions as they are delivered over a 10-year period (that overlap with the first component), which would be channeled through the ISFL.

At the same time, the project would monitor forest cover change throughout Oromia. The Program would monitor and account for positive and negative changes in forest cover and associated greenhouse gas emissions within the regional state boundaries of Oromia (i.e., the 'accounting area of the Program'). As per the 2013 Ethiopia Mapping Agency map and the National REDD+ Secretariat's proposed forest definition, this includes 8.7 million hectares of forests, spread over Oromia regional

# OTHER UPDATES TO THE ISFL WEBSITE



Home > Ethiopia REDD+ Strategy, Pilot Projects, Safeguards, Consultations

## Ethiopia REDD+ Strategy, Pilot Projects, Safeguards, Consultations



### REDD+ Strategy

- › National REDD+ Strategy draft (English)
- › Study of Deforestation and Forest Degradation in Ethiopia (English)
- › REDD+ Strategy Lima Presentation December 2005 (English)
- › REDD+ Strategy Final November 2014 (English)
- › REDD+ Strategy Drivers Study Workshop May 2015 (English)
- › Final Inception Report January 2015 (English)
- › REDD+ Study of the Causes of Deforestation Minutes of Meeting January 2015 (English)
- › Terms of Reference for Drivers Study (English)
- › Inception Report Legal Institution Final May 2014 (English)
- › Legal and institutional framework for a national REDD+ program in Ethiopia May 2015 (English)

### Pilot Projects

- › Terms of Reference Forest Officer for the Amhara Regional State REDD+ Coordination Unit Amhara (May 2015) (English)
- › Terms of Reference for Amhara Regional State REDD+ Pilot Coordinator Amhara (May 2015) (English)
- › Terms of Reference for Forest Officer for the Regional REDD+ Coordination Unit SSNPR (May 2015) (English)
- › Terms of Reference for SSNPR REDD+ Pilot Coordinator (May 2015) (English)
- › Terms of Reference for Forest Officer for Regional State REDD+ Coordination Unit Tigray (May 2015) (English)
- › Terms of Reference for Regional State REDD+ Pilot Coordinator Tigray (May 2015) (English)
- › Inception Report Identification and Preparation of REDD+ Pilot Proposals in Ethiopia (August 2014) (English)
- › Procedure in selecting potential forest sites for REDD+ pilot development in Ethiopia (December 2014) (English)

### Safeguards

Includes new resources related to program Consultations; REDD+ Strategy; Pilot Projects; Safeguards.

# CONTENTS

---

1. RECENT PROGRESS

2. STAKEHOLDER ENGAGEMENT

3. COUNTRY PROGRAMS





# STAKEHOLDER ENGAGEMENT APPROACH

---

*Stakeholders are those groups that have a stake/interest/right in the agricultural, forest, energy, and transport sectors in the landscapes where ISFL programs operate, and may be affected either negatively or positively by the Initiative's activities.*

WBG Tools for Engagement
World Bank and IFC operational and safeguard policies
Strategic Environmental and Social Assessment
Environmental and Social Management Framework
Operational Policy 4.10 on Indigenous Peoples
Performance Standard 7

# DECISION-MAKING: STAKEHOLDER ENGAGEMENT

---

*The ISFL builds on the solid foundation of the FCPF and UN-REDD, utilizing existing channels to engage with stakeholders.*

Stakeholders are engaged throughout the lifetime of the program and provide critical input to ISFL program design and implementation through:

- Studies
- Consultations
- In-country missions and field visits
- Regular engagement with recipient governments
- Steering committees, user groups, Secretariats, working groups, and existing platforms



# CONTENTS

---

1. RECENT PROGRESS

2. STAKEHOLDER ENGAGEMENT

3. COUNTRY PROGRAMS





# COUNTRY OVERVIEW: COLOMBIA

<b>Program profile</b>	<b>Orinoquia Integrated Landscape Program (OILP)</b>
<b>Jurisdiction</b>	Orinoquia region, Colombia
<b>Size of jurisdiction</b>	38.1 million hectares
<b>Population in jurisdiction</b>	1.5 million
<b>Implementing agency</b>	Ministry of Agriculture and Rural Development (MADR), Ministry of Environment and Sustainable Development (MADS)
<b>Proposed funding envelope size</b>	\$15 million preparation and upfront grant, up to \$50 million for ER payments
<b>Date program opened</b>	August 20, 2015



# STAKEHOLDER ENGAGEMENT IN COLOMBIA

---

The ISFL Colombia program is early in its design. Some stakeholder engagements to date include:

- **Stakeholder roundtables (February 2015):** included representation from CSOs, NGOs, think tanks, government entities, private sector companies and associations, research institutes, and academia.
- **Presentation of the ISFL Colombia program at ExpoGestion Orinoquia (September 2015):** a convening of public, private, and civil society actors to collaborate on and discuss development in the Orinoquia region.

Some of the stakeholders the program engages include, but are not limited to:

CSOs/NGOs	Dignillanos, WWF, WCS, Climate Focus, TNC, Earth Innovation
Academia	University of Andes, University Javeriana
Private Sector	FEDEGAN, FEDEPALMA, Poligro, Alqueria, Alpina, Grupo Éxito
Research	IDEAM, UPRA, CORPOICA, CIAT, Instituto Humboldt



# COUNTRY OVERVIEW: ZAMBIA

<b>Program profile</b>	<b>Zambia Integrated Forest Landscapes Program (ZIFL-P)</b>
<b>Jurisdiction</b>	Eastern Province, Zambia
<b>Size of jurisdiction</b>	5.1 million hectares
<b>Population in jurisdiction</b>	1.59 million
<b>Implementing agency</b>	National Climate Change Secretariat
<b>Proposed funding envelope size</b>	\$8 million preparation and upfront grant, up to \$30 million for ER payments
<b>Funding leveraged</b>	\$9 million from GEF
<b>Date program opened</b>	September, 2014



# STAKEHOLDER ENGAGEMENT IN ZAMBIA

---

*The Zambia program consults and engages with relevant stakeholders to inform and reach consensus on some key program design elements.*

**Specifically, the program collaborates with stakeholders regularly through the following channels:**

- On-going World Bank missions
- Monthly REDD+ Working Group meetings, organized by the National Climate Change Secretariat and Forestry Department
- Carbon Accounting Methodology workshops (3 to date)
- Chipata Round Table meetings to date



# STAKEHOLDER ENGAGEMENT IN ZAMBIA

Participants in these forums include, but are not limited to:

Missions	REDD+ Working Gp	Methodology Workshops
<p>Alliance Cotton Ginneries                      Alliance Tobacco                      BioCarbon Partners                      Cargill                      Community Markets for Conservation (COMACO)                      Conservation Farming Unit                      Indaba Agricultural Research Institute                      Industrial Development Corporation                      Japan Tobacco International                      NedBank                      NWK Agri-services                      SimGas                      SNV                      Stanbic Bank                      Zambia Climate Change Network                      Zambia National Commercial Bank (ZANACO)                      Zambia National Farmers Union</p>	<p>BioCarbon Partners                      COMACO                      FAO (Integrated Land Use Assessment Team)                      TetraTech ARD                      UN-REDD                      USAID                      Zambia Wildlife Authority (ZAWA)</p>	<p>BioCarbon Partners                      Brinkman Associates                      COMACO                      FAO (Integrated Land Use Assessment Team)                      Forestry Department                      TetraTech ARD                      UN-REDD                      USAID                      VCS                      ZAWA                      Zambia Environmental Management Agency (ZEMA)</p>

# STAKEHOLDER ENGAGEMENT IN ZAMBIA

---

The Chipata Roundtable was established to provide a forum for government and non-governmental stakeholders to discuss major environmental threats to the Luangwa Valley ecosystem.

<b>Chair</b>	Provincial Permanent Secretary
<b>Task Force members</b>	District Commissioner of Chipata COMACO (Secretariat) Cargill
<b>Meeting Frequency</b>	Every 6 months

In order to serve effectively as the steering committee for the ISFL program, the Roundtable will likely:

- Be expanded to cover the entire Eastern Province.
- Potentially develop new operating procedures and reorganize its structure.

# STAKEHOLDER ENGAGEMENT IN ZAMBIA

---

**Participants in the Chipata Round Table include, but are not limited to:**

<p><b>BioCarbon Partners</b> <b>Business Development Services Africa (BDSA)</b> <b>Cargill</b> <b>Chiefs</b> Chipata District Administration <b>COMACO</b> <b>Chimfwembe Organisation for Promotion of Childhood Rights Education (COPCRED)</b> <b>Cotton Board of Zambia</b> Department of Local Government Administration (DLGA) Forestry Department <b>Land Alliance</b> Lusaka Province Planning Authority (DPPH)</p>	<p>Ministry of Agriculture Ministry of Chiefs and Traditional Affairs (MOCTA) Ministry of Lands Ministry of Local Government and Housing (MLGA) Peace Corps Permanent Secretary of the Eastern Province Provincial Administration Provincial Local Government Officers <b>RDA Eastern Province</b> <b>Total Land Care</b> USAID Zambia National Service (ZNS) Zambia Police ZAWA ZEMA</p>
---	---



# STAKEHOLDER ENGAGEMENT IN ZAMBIA

---

The Zambia program has and continues to engage relevant stakeholders at critical points in the preparation and design of the program, including in the following instances:

- **Eastern Province ‘Vision’ Study consultation (October 2014 – December 2015):** on-going consultations at the national, provincial, district, chiefdom, and community levels to gather feedback on the approach for the program. These consultations are part of broader program preparation consultations.
- **Objective and vision consultation in the Eastern Province (December 2014):** National Climate Change Secretariat shared early ideas and gathered feedback from CSOs, chiefs, the private sector, government agencies, and other relevant stakeholders.
- **Needs Assessment Stakeholder Workshop (August 2015):** discussion of critical design areas for preparation of a Technical Assistance Needs Assessment study.
- **Government of Zambia Stakeholder Workshop (October 7-8, 2015):** consultation of relevant stakeholders by the Government on the design of the program to ensure adequate consensus and commitment to conserving the forest.

# STAKEHOLDER ENGAGEMENT IN ZAMBIA

---

**Participants in these workshops and consultations include, but are not limited to:**

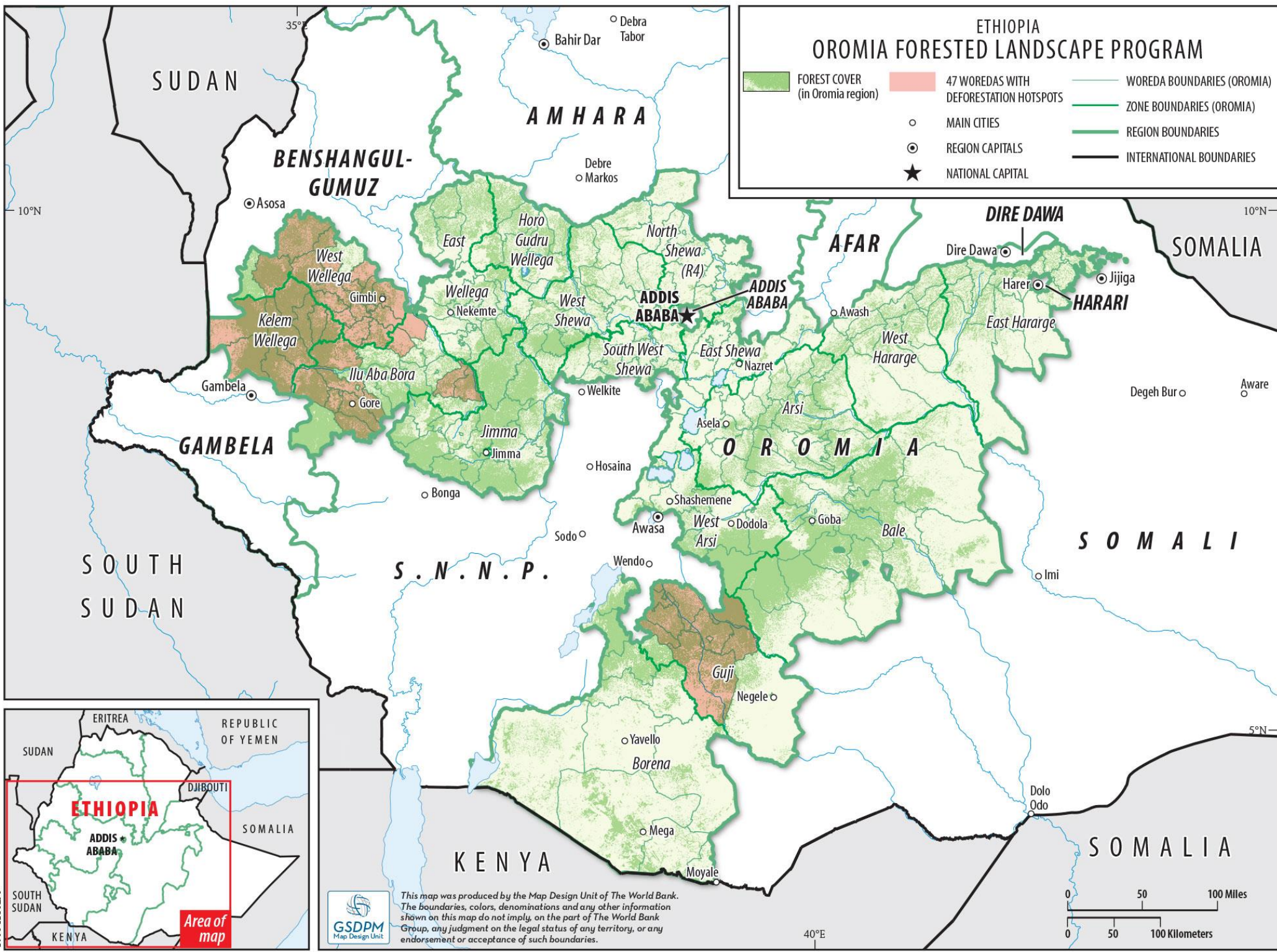
<p>Agricultural Commodities Marketing Program (ACOMAP)</p> <p><b>BioCarbon Partners</b></p> <p><b>Cargill</b></p> <p>Central District Land Association</p> <p><b>COMACO</b></p> <p><b>Community Resource Boards</b></p> <p><b>COPCRED</b></p> <p><b>Farmer groups</b></p> <p>Forestry Department</p> <p><b>Foundation for Democratic Process (FODEP)</b></p> <p><b>Local chiefs, communities, village headmen</b></p> <p><b>Luangwa Conservation Society</b></p> <p><b>Luangwa Safari Association</b></p>	<p>Ministry of Agriculture</p> <p>Ministry of Lands, Natural Resources and Environmental Protection</p> <p>MOCTA</p> <p>Permanent Secretary of the Eastern Province</p> <p>Provincial Administration</p> <p>Provincial Planning Unit</p> <p>Peace Corps</p> <p><b>Radio Breeze FM</b></p> <p><b>Total Land Care</b></p> <p><b>Wildlife Conservation Society</b></p> <p><b>Zambia Climate Change Network</b></p> <p><b>ZANIS</b></p> <p>ZAWA</p> <p>ZEMA</p>
---	---

# COUNTRY OVERVIEW: ETHIOPIA

<b>Program profile</b>	<b>Oromia Forested Landscape Program (OFLP)</b>
<b>Jurisdiction</b>	Oromia State, Ethiopia
<b>Size of jurisdiction</b>	28.5 million hectares
<b>Population in jurisdiction</b>	30+ million
<b>Accounting area</b>	All forests in Oromia
<b>Implementing agency</b>	Oromia Forest and Wildlife Enterprise and regional bureaus
<b>Proposed funding envelope size</b>	\$18 million upfront grant, up to \$50 million for ER payments
<b>Date program opened</b>	September 2014

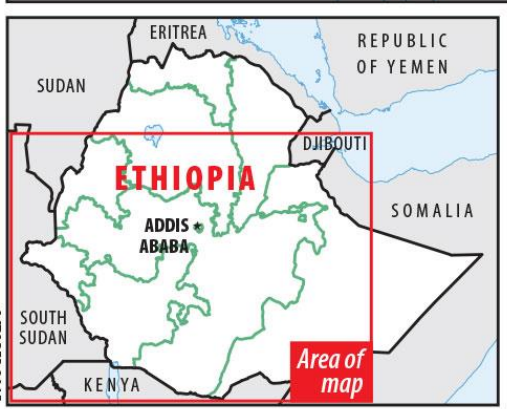




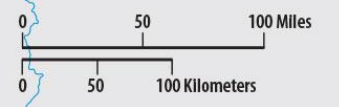


### ETHIOPIA OROMIA FORESTED LANDSCAPE PROGRAM

<p><span style="display: inline-block; width: 20px; height: 10px; background-color: #90EE90; border: 1px solid black; margin-right: 5px;"></span> FOREST COVER (in Oromia region)</p> <p><span style="display: inline-block; width: 20px; height: 10px; background-color: #FFC0CB; border: 1px solid black; margin-right: 5px;"></span> 47 WOREDAS WITH DEFORESTATION HOTSPOTS</p> <p><span style="display: inline-block; width: 0; height: 0; border-left: 5px solid transparent; border-right: 5px solid transparent; border-bottom: 10px solid black; margin-right: 5px;"></span> MAIN CITIES</p> <p><span style="display: inline-block; width: 0; height: 0; border-left: 5px solid transparent; border-right: 5px solid transparent; border-bottom: 10px solid black; margin-right: 5px;"></span> REGION CAPITALS</p> <p><span style="display: inline-block; width: 0; height: 0; border-left: 5px solid transparent; border-right: 5px solid transparent; border-bottom: 10px solid black; margin-right: 5px;"></span> NATIONAL CAPITAL</p>	<p><span style="display: inline-block; width: 20px; border-bottom: 2px solid black; margin-right: 5px;"></span> WOREDA BOUNDARIES (OROMIA)</p> <p><span style="display: inline-block; width: 20px; border-bottom: 2px solid green; margin-right: 5px;"></span> ZONE BOUNDARIES (OROMIA)</p> <p><span style="display: inline-block; width: 20px; border-bottom: 2px solid green; margin-right: 5px;"></span> REGION BOUNDARIES</p> <p><span style="display: inline-block; width: 20px; border-bottom: 2px solid black; margin-right: 5px;"></span> INTERNATIONAL BOUNDARIES</p>	
---	--	--



This map was produced by the Map Design Unit of The World Bank. The boundaries, colors, denominations and any other information shown on this map do not imply, on the part of The World Bank Group, any judgment on the legal status of any territory, or any endorsement or acceptance of such boundaries.



OCTOBER 2015

BRD 41944

# STAKEHOLDER ENGAGEMENT IN ETHIOPIA

---

*The Ethiopia program builds on forums established through the REDD+ Readiness process at the national and jurisdictional levels.*

Specifically, the program engages stakeholders partly through:

- **National and Oromia REDD+ Steering Committees**
- **The Monitoring, Reporting, and Verification (MRV) Task Force**
- **The National REDD+ Strategy Task Force**
- **The Strategic Environmental and Social Assessment (SESA) Task Force**





# STAKEHOLDER ENGAGEMENT IN ETHIOPIA

## Participants in the steering committees include:

National REDD+ Steering Committee	Oromia REDD+ Steering Committee
<p>Amhara Forest Enterprise            Amhara Regional State Bureau of Agriculture            Ethiopian Broadcasting Corporation            Ethiopian Institute of Agricultural Research            Ethiopian Institute of Biodiversity            Ethiopian Wildlife Conservation Authority            Ministry of Agriculture            Ministry of Environment and Forest            Ministry of Water, Irrigation and Energy            Ministry of Women, Children and Youth            Oromia Forest and Wildlife Enterprise            Oromia Regional State Bureau of Agriculture            Southern Nations, Nationalities and Peoples' Regional State (SNNPRS) Bureau of Agriculture            Tigray Regional State Bureau of Agriculture            Wondo Genet College of Forestry and Natural Resources</p>	<p>Adama University  <b>Chilimo Gaji Forest Management Union</b>  <b>Farachu Forest Management Union</b>            Oromia Bureau of Agriculture            Oromia Bureau of Rural Land and Environmental Protection            Oromia Bureau of Water, Minerals and Energy            Oromia Bureau of Woman and Children Affairs            Oromia Bureau of Youth and Sport            Oromia Forest and Wildlife Enterprise            Oromia Institute of Agricultural Research            Oromia Public Enterprises Supervising Authority            Wondo Genet College of Forestry and Natural Resources</p>

# STAKEHOLDER ENGAGEMENT IN ETHIOPIA

Participants in these forums include, but are not limited to:

MRV Task Force	National REDD+ Strategy Task Force	SESA Task Force
AAU Biodiversity and Plant Conservation Department Ethiopian Mapping Agency FAO <b>Farm Africa</b> Forest and Environment Research Institute GIZ Ministry of Environment and Forest (MEF) Environment Sector MEF Forestry Sector <b>Water and Land Resource</b> Wondo Genet College of Forestry and Natural Resources <b>World Vision Ethiopia</b>	Agriculture Investment Agency <b>CIFOR</b> Ethiopian Broadcasting Corporation Ethiopian Development Research Institute <b>Ethio-Wetlands and Natural Resources Association</b> Forest and Environment Research Institute <b>Global Green Growth Institute (GGGI)</b> MEF Environment Sector MEF Forestry Sector Ministry of Agriculture Ministry of Water, Irrigation and Energy Ministry of Finance and Economic Development (MOFED)	AAU Climate Science Center <b>Climate Change Forum (CCF) Ethiopia</b> <b>Ethiopia Environmental Journalists Association</b> <b>Farm Africa</b> Forest and Environment Research Institute <b>Horn of Africa Regional Environment Center and Network (HoA-REC &amp; N) Initiative for Living Community Action</b> Ministry of Women, Youth and Children Affairs MEF Environment Sector MEF Forestry Sector <b>Pastoralist Forum Ethiopia</b> <b>SOS Sahel</b> Wondo Genet College of Forestry and Natural Resources

# STAKEHOLDER ENGAGEMENT IN ETHIOPIA

---

The Ethiopia program has and continues to engage relevant stakeholders at critical points in the preparation and design of the program, including through the following mechanisms:

- **OFLP Consultations (December 2014 and January 2015):** information on the program was shared with government officials, NGOs, and PFM cooperative representatives.
- **Consultation and Participation Plan for the OFLP:** Farm Africa and SOS Sahel have supported the Oromia REDD+ Coordination Unit with the preparation of this plan and more broadly with the overall preparation of the program.
- **Technical Workshops for the design of the OFLP and regular missions:** stakeholder participation can include, but is not limited to Ethio-Wetlands and Natural Resources Association, Farm Africa, GGGI, ICCO, IDH, and World Vision.
- **The REDD+ Pilot Learning Network:** stakeholder participation can include, but is not limited to Ethio-Wetlands and Natural Resources Association, Environment and Coffee Forest Forum, Farm Africa, GIZ, HoA-REC & N, SOS Sahel, Sustainable Natural Resource Management Association, and World Vision Ethiopia.

# QUESTIONS

---



## FURTHER INFORMATION

---

Ellysar Baroudy  
ebaroudy@worldbank.org

Dan Radack  
dradack@worldbank.org

<http://www.biocarbonfund-isfl.org/>